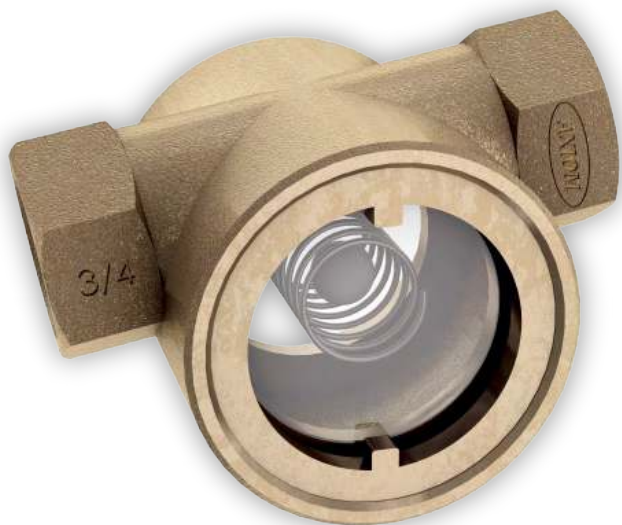


# Side Stream Filter



## ASFI-075 (Sight Flow Indicator)

- Ⓐ 3/4" FNPT Connection
- Ⓐ Provide quick visual identification of flow
- Ⓐ Helps identify, if a filter cartridge requires replacement
- Ⓐ Mounts in any orientation
- Ⓐ Buoyant TPX ball movement can be seen at flow rates less than 1 GPM
- Ⓐ Each sight flow indicator is inspected and pressure tested
- Ⓐ Rebuild kits are available

3/4" FNPT Connection  
125 Psi (860 kPa) at 200°F (93°C)

### MATERIAL

<b>Body</b>	Brass (JIS YBSC3)
<b>O-Ring</b>	EPDM
<b>Window</b>	Tempered borosilicate glass
<b>Cage</b>	S.S. 304
<b>Ball</b>	TPX
<b>Washer</b>	Cork (non-wetted part)



✉ info@axiomind.com

☎ (877)651-1815

🌐 WWW.AXIOMIND.COM

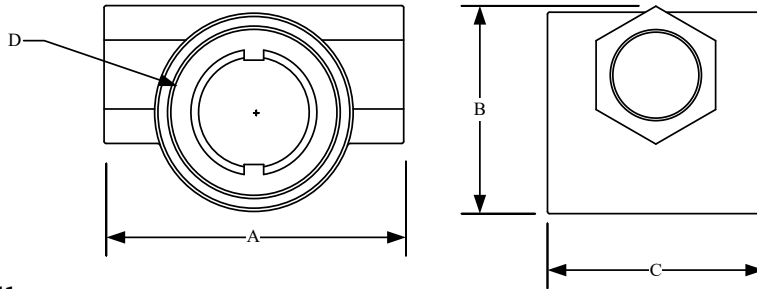
**FilterPak**



## ASFI-075 SIGHT FLOW INDICATOR TECHNICAL INFORMATION

**DIMENSIONS :**

Size	Part #	Max. pressure	A	B	C	D
¾"	ASFI-075	125psi (860kPa)	3.6" [92mm]	2.5" [63mm]	2.6" [67mm]	2" [51mm]



**WEIGHT :** 1.36 kg 3 lbs

**SPECIFICATION :**

<b>Max temperature</b>	200°F (93°C)
<b>Max pressure</b>	125psi (860kPa)
<b>Connection</b>	Threaded FNPT size ¾"
<b>Compatible fluids</b>	Water, propylene and ethylene glycol, methanol and ethanol in concentrations up to 50%. Not for potable water.

**OPTIONAL ACCESSORIES :**

- ASFI-K** -- Sight Flow Rebuild Kit includes: 2 glass windows, 2 O-rings, and 2 cork gaskets.
- ASFI-Tool** -- Opening Tool.

**LIMITED WARRANTY :**

The Axiom (ASFI) sight flow indicator is warranted against defects in materials and workmanship for one year.

Project \_\_\_\_\_  
 Consultant \_\_\_\_\_  
 Unit Tag \_\_\_\_\_

Location \_\_\_\_\_  
 Contractor \_\_\_\_\_  
 Sales Agent \_\_\_\_\_