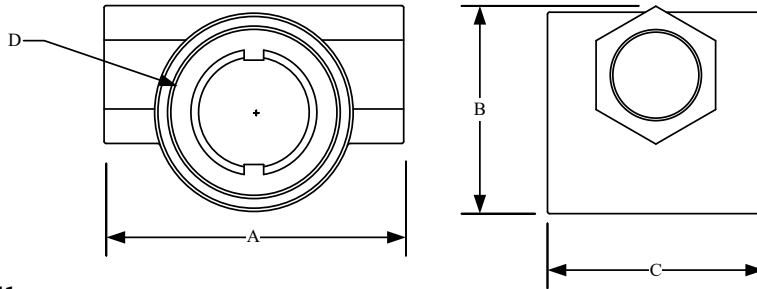




ASFI-075 SIGHT FLOW INDICATOR TECHNICAL INFORMATION

DIMENSIONS :

Size	Part #	Max. pressure	A	B	C	D
3/4"	ASFI-075	125psi (860kPa)	3.6" [92mm]	2.5" [63mm]	2.6" [67mm]	2" [51mm]



WEIGHT : 1.36 kg 3 lbs

SPECIFICATION :

Max temperature	200°F (93°C)
Max pressure	125psi (860kPa)
Connection	Threaded FNPT size 3/4"
Compatible fluids	Water, propylene and ethylene glycol, methanol and ethanol in concentrations up to 50%. Not for potable water.

OPTIONAL ACCESSORIES :

- ASFI-K** -- Sight Flow Rebuild Kit includes: 2 glass windows, 2 O-rings, and 2 cork gaskets.
- ASFI-Tool** -- Opening Tool.

LIMITED WARRANTY :

The Axiom (ASFI) sight flow indicator is warranted against defects in materials and workmanship for one year.

Project _____
 Consultant _____
 Unit Tag _____

Location _____
 Contractor _____
 Sales Agent _____