



CLEAN F-STEEL TECHNICAL INFORMATION

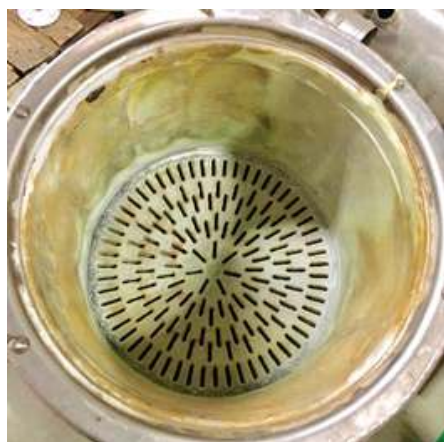
DIRECTIONS:

Spray AXI-THERM CLEAN F-STEEL directly onto the cold surface to be cleaned until the deposits to be removed are completely wet. Do not dilute prior to application. Let the product react for 3 - 5 minutes before brushing and rinsing. In case of persistent deposits, repeat the cleaning procedure. Firing the boiler afterwards will help to further clean the heat exchanger. Thoroughly rinse the whole surface with water. Do not mix with other chemicals. Do not use in potable water systems. Do not ingest. Do not dispose of waste through the environment. Keep out of reach of children. Clean F-Steel is suitable for use with Stainless steel and copper heat exchangers.

BEFORE



AFTER



Project _____
Consultant _____
Unit Tag _____

Location _____
Contractor _____
Sales Agent _____