

CONDENSATE PUMP

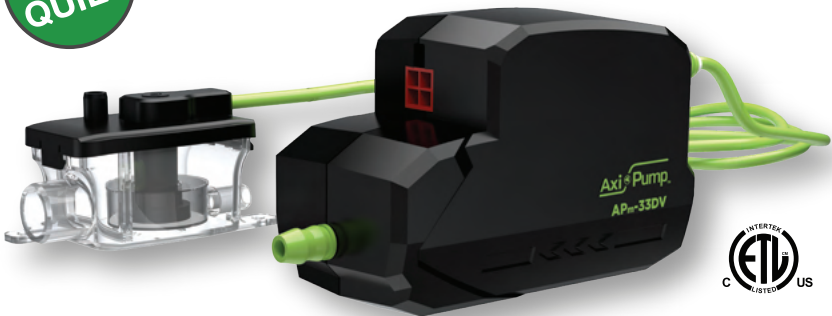


AP_m-33DV

Mini Split Condensate Pump

INSTALLATION, OPERATION & MAINTENANCE

ULTRA
QUIET



Mini Split Condensate Pump

- Pump body and reservoir are separated
- Easy installation & servicing
- Low power consumption
- 33' discharge head
- Built-in high level switch
- Mesh filter inside of reservoir
- Waterproof float made from plastic material
- ETL certified

Axi  **Pump**™

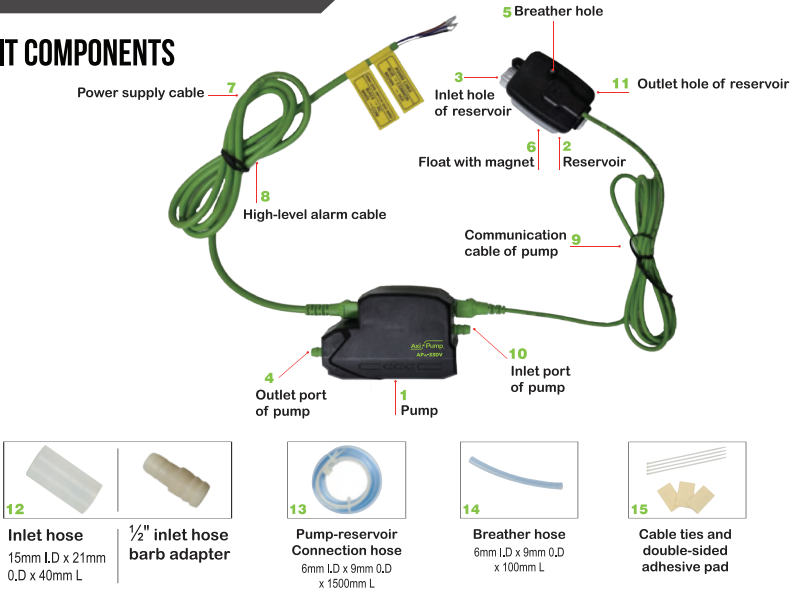
✉ info@axiomind.com

☎ (877)651-1815

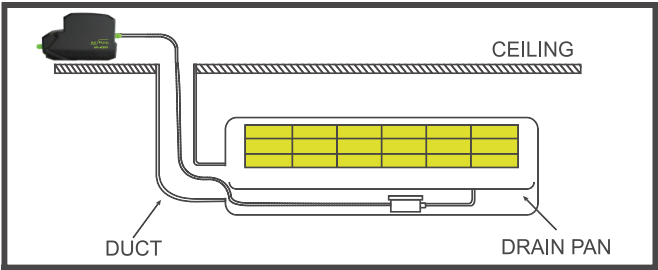
🌐 WWW.AXIOMIND.COM

CONDENSATE PUMP

KIT COMPONENTS



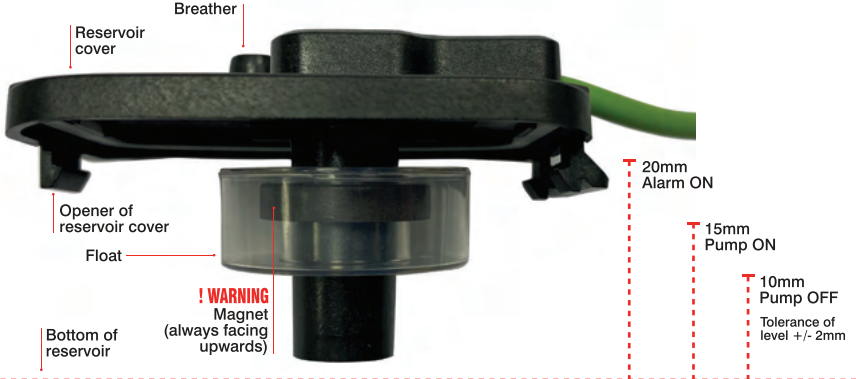
RECOMMENDED INSTALLATION



SPECIFICATIONS

Item	Specification	Item	Specification
Use with	Air Conditioner (Max. 16kw)	Fluid	Condensate of 1°C~40 °C (33°F~104°F)
Power supply	100-240V, 60Hz	Intermittent Rating	3 minutes
Electrical output	0.03A, 2.5W	Working without fluid coming through the pump	Not allowed
Safety switch contacts	Max. 3 Amp.	Pump size	123mm(L) x 47mm(W) x 66mm(H)
Max. suction head	3m (10ft)	Reservoir size	76.7mm(L) x 43.2mm(W) x 40.3mm (H)
Max. discharge head	10m (33ft)	Effective capacity of reservoir	35mL (1 oz)
Max. flow rate at zero head	29L/h at zero meter (7.6 USG/h)		

■ LEVEL SENSOR OPERATION



■ FLOW RATES AT EACH HEAD

Head	0 m / 0 ft	4 m / 13 ft	6 m / 20 ft	10 m / 33 ft
ℓ/h	29	19	15	10
gal/h	7.66	5.02	3.96	2.64

■ WARNING

- Do not operate above 10m (33ft) total head.
- Do not use to pump flammable or explosive fluids such as gasoline, fuel oil, alcohol, etc.
- Do not use in explosive atmosphere.
- Do not use to pump hot water over 40 °C (104 °F)
- Do not handle pump with wet hands, or when standing on a wet or damp surface, or in water.
- To reduce risk of electrical shock, be certain that the pump is connected to a properly grounded earth.
- Connect the pump only to the power supply specified on the name plate of the pump.
- If the power supply cord is damaged, it must be replaced by the manufacturer, or its service agent, or a similarly qualified person in order to avoid a hazard.
- The means for disconnection must be incorporated in the fixed wiring according to local wiring regulations.
- In any installations where property damage and/or personal injury might result in a non operational pump, a back up system and/or alarm should be used.
- Do not twist the drain or discharge hose.
- Before doing any maintenance or repair of the pump, please disconnect the pump from the power supply to avoid an electrical shock.
- Please note that the pump is not a submersible pump.
- Every installation or after-sales service, should be done by a qualified service technician.
- The intermittent ratings of this pump is not longer than 5 minutes.
- This pump is not designed to run dry. Repeated runs while dry will cause the pump to fail. This pump should not run for even a 1 minute period without fluid flowing through the pump.



SERVICE & MAINTENANCE INSTRUCTIONS

1. Carefully unpack the unit and check for damage. Make sure that all of the required parts are included. The units are thoroughly tested before packing to insure safe delivery and operation. If there is any sign of damage due to the shipment, return it to the place of purchase for repair or replacement.
2. Select a suitable mounting location.
3. Connect the inlet hose (12) to the drain hose of air conditioner. Connect the other end of inlet hose (12) to the inlet hole of reservoir (3).
4. Connect the breather hose (14) to the breather of reservoir cover (5).

! WARNING The breather and the breather hose should NOT be clogged!

5. Mount the reservoir (2) on a solid surface using the double-sided adhesive pad.
! WARNING The reservoir (2) should be mounted horizontally and level!
6. Connect the outlet hole of reservoir (11) and the inlet port of pump (10) with the connection hose (13).
7. Attach the double-sided adhesive pad (15) on the bottom of pump. Mount the pump (1) in a suitable location. If needed, use the cable ties (15) to fasten the pump.

! WARNING Attached the double-sided adhesive pad (15) between the pump (1) and any hard surfaces to reduce the vibration noise!

8. Connect the overflow alarm cable (COM and NC) into cooling signal wire of the air conditioner indoor unit, to avoid the continued operation of the air conditioning unit in the event of pipework blockage or pump failure.

! WARNING All wiring to be done by qualified service technicians, who have assessed the set-up of the individual air conditioning unit!

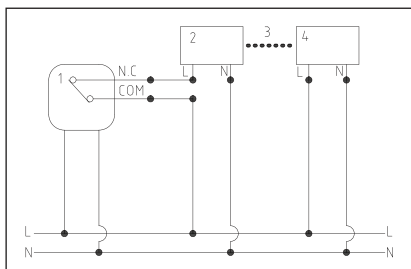
9. Connect your 6mm I.D x 9mm O.D discharge hose to the outlet port of pump (4) and extend the discharge hose to an appropriate drain.

! WARNING Make sure that every connection hose is not clogged or twisted!

10. Make sure that the power source voltage matches with the pumps requirement. Connect the power supply cable (7) to a constant source of power (not a fan or other device that runs intermittently).

! WARNING Do NOT connect or link the air conditioners power cable directly to the power supply cable of the pump (7).

11. When all the above tasks are done, please perform a test (see below).



1. PUMP UNIT
2. INDOOR UNIT
3. INTERCONNECTING CABLE
4. OUTDOOR UNIT

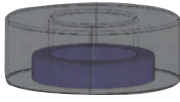
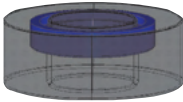
(L) LIVE/HOT : Brown
(N) NEUTRAL/Common : Blue
(N.C) NORMALLY CLOSED : Black
(COM) COMMON : White

TESTING

- After the installation, please test pump's operation for 2-3 times by pouring water slowly into the drain pan of air conditioner.
- Please check if there is any water leakage or siphoning action.
- There will be clicking noises for the initial start up phase only (usually for the first 1-5 times of pumping operation) which is not a disorder but a normal operation.

SERVICE & MAINTENANCE INSTRUCTIONS

1. Before attempting to service or disassemble any component, make sure that the unit is disconnected from the power source.
2. The cleaning of reservoir should be done every six months, usually at the beginning and the end of the air conditioning season.
3. Open the reservoir cover using the opening wing.
4. Clean the reservoir and the float using a solution of water containing 5% bleach. Replace the float in the initial position (magnet facing up) and reinstall the reservoir cover.



Metal filter

5. Run test after service and maintenance.

TROUBLESHOOTING

Problem	Solution
The unit does not run.	Check the power supply Check the air conditioner to see if condensation is being produced Make sure the inlet pipe and metal filter are not clogged
The unit makes loud noises even after the first dry-running phase.	Check if the pump is in contact with any hard surfaces. If it is, anti-vibration materials should be positioned between the pump and the hard surface Make sure there is no siphoning action Check outlet hose is not blocked
The unit runs but does not pump the liquid out properly.	Check the highest point of the discharge piping does not exceed the maximum delivery head of the pump Check to make sure no pipes are clogged or twisted Check that the flow rate of the pump is sufficient for the condensation volume of the air conditioner

LIMITED WARRANTY

Axi-Pump product is warranted to be free of defects in workmanship and materials for two (2) years from the date of sale from Axiom Industries (Axiom) to the distributor, or one (1) year from the date of purchase by the user, with proof of purchase. This limited warranty will not exceed three (3) years in any event.

This limited warranty does not apply to pumps installed improperly, misapplied, or used with incompatible fluids or components. Axiom will not warrant any product which is damaged or modified outside the Axiom factory. All defective products returned under warranty will be inspected to determine the cause of failure. Returns are to be packaged and shipped prepaid to the address designated on the Axiom Return Goods Authorization form. Axiom shall not be liable for freight damage incurred during shipping.

Axiom's obligation under this warranty policy is limited to the repair or replacement of the pump, at the option of Axiom. Products found not defective may be subject to charges for the testing and repackaging of the pumps. Warranty replacement product will ship on a freight allowed basis only from the Axiom factory. Axiom reserves the right to choose the method of transportation for warranty replacement product.

This limited warranty is in lieu of all other warranties, expressed or implied, and no other person is authorized to give warranty, assume obligation, or liability on Axiom's behalf. Axiom shall not be liable for any labor, damage, or other expense, nor shall Axiom be liable for indirect, incidental, or consequential damages of any kind incurred by the reason of the use or sale of any defective product or part. This limited warranty covers products distributed within Canada and the USA.

"Acceptable For Indoor Use Only"

"Nonsubmersible Pump"

"CAUTION" - To reduce risk of electric shock, install with motor and all electrical components above the top grade level of the sump. This pump is not submersible.

"WARNING"

"Risk Of Electric Shock - This Pump Has Not Been Investigated For Use In Swimming Pool Or Marine Areas."

"To reduce risk of electric shock, see instruction manual for proper installation."

"To reduce risk of electric shock, connect only to a properly grounded, grounding-type receptacle."

"ATTENTION" - Pour réduire les risques de choc électrique, d'installer avec moteur et tous les composants électriques au-dessus du sol haut de puisard. Cette pompe n'est pas submersible.

"AVERTISSEMENT"

"Risque de chocs électriques - Cette pompe n'a pas été étudiée pour une utilisation dans une piscine ou marine."

"Pour réduire les risques de choc électrique, voir le manuel d'instructions pour une installation correcte."

"Pour réduire les risques de choc électrique, connecter uniquement à une prise correctement mise à la terre-type décapient."

"Double Insulation — When servicing, use only identical replacement parts."

"Double isolation - lors de l'entretien, n'utilisez qu'un remplacement identique"

"THERMALLY PROTECTED"

Date of Production: It is stamped on the Pump

"FOR INDOOR USE ONLY"

"EMPLOYER UNIQUEMENT À L'INTÉRIEUR"

"ENCLOSURE TYPE 2"

"BOÎTIER DE TYPE 2"



Tel: 306-651-1815

Toll Free: 1-877-651-1815

E-mail: info@axiomind.com

APm-33DV IOM 2023